

# S2 Enterprise Ultra™ and S2 Enterprise Select™

Application Information for Version 4.1

## Feature Summary

- Web-based network appliance architecture
- *Zero footprint* means that there is no software to install
- Compatible with all standard S2 network devices
- Expanded capacities for scaled applications
- Easy retrofit to upgrade smaller S2 systems
- 1U (Enterprise) or 2U (Enterprise Ultra) rack mount enclosure
- RAID-1 storage for maximum reliability (Enterprise Ultra)
- Supports commercial off-the-shelf memory and peripherals
- Expandable RAM and hard disk arrays
- Backup to removable media, NAS, or FTP server
- Built-in web server and ODBC-accessible database
- DVD-CDRW drive for backup and load (Enterprise Ultra)
- Complete documentation library delivered to your web browser
- Built-in diagnostics simplify installation and trouble-shooting

## Overview

The S2 Enterprise series Network Controllers bring the total cost of ownership (TCO) benefits of the S2 NetBox platform to applications of greater scale and complexity. Designing and implementing larger systems is straightforward with S2 Enterprise: simply substitute an S2 Enterprise or S2 Enterprise Ultra for the S2 Network Controller (S2NC) and gain increases in processing speed, storage, and the ability to support more S2 Network Nodes (S2NN) and web users on a single system.

As with the S2 NetBox, S2 Enterprise systems are network appliances with web-based, embedded software. There is no software to install on any client or server; a common web browser is all that is required to operate the system. Any of the popular web browsers can be used, making the system accessible to all users, regardless of operating system, whether local or remote, whether running a PC, Macintosh, or Sun workstation.

Installation is truly plug-and-play. Simply power up the S2 Enterprise processor, assign an IP address, and begin operation. The S2 Enterprise automatically recognizes S2 Network Nodes and application blades connected to your LAN, WAN, or the public Internet. Setup could not be easier: graphical displays help you configure your system with point and click simplicity.

Two models are offered for maximum flexibility. The standard S2 Enterprise offers the benefits of higher processing speed, as well as increased device and user capacity in a value-priced package. The S2 Enterprise Ultra includes a faster processor and larger RAM array, and



*The S2 Enterprise Select (shown) and S2 Enterprise Ultra fit standard 19" racks*

adds the improved robustness of internal, hot-swappable redundant hard disks in RAID-1 (disk mirroring) configuration.

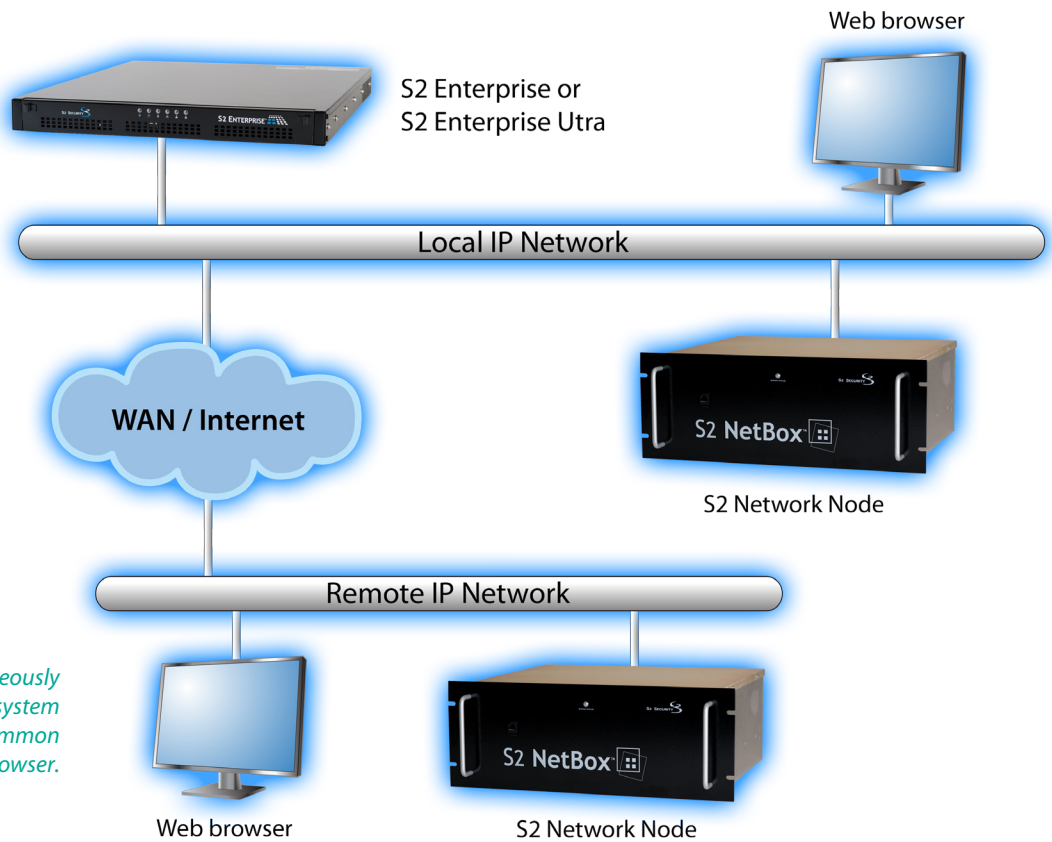
Beyond capacity increases, S2 Enterprise includes advanced capabilities that support your scaled environment. New software is easily loaded and automatically distributed throughout system components over the network. S2 Enterprise systems can be easily augmented with compatible applications from a number of third party vendors that provide video, visitor management, single sign-on, and other integrated solutions.

## S2 Enterprise in Detail

*A single S2 Enterprise-class controller can be located anywhere there is IP network connectivity.*

*Built-in secure message authentication protects communications over the network. It is even possible to route connections over the public Internet.*

*Multiple users can simultaneously operate the S2 Enterprise system using nothing more than a common web browser.*



## Specifications

	S2 Enterprise Select	S2 Enterprise Ultra
Nodes/MicroNodes supported	128	512
Processor	Intel Quad Core 2 - 2.6GHz	Intel Quad Core 2 - 3.2 GHz
RAM memory	2GB	4GB
SSD hard disk drive	32GB SLC SSD	2 x 32GB SLC SSD ; RAID-1
CDRW/DVD-R	Internal, Standard	Internal, Standard
Ethernet ports	1 (10/100/1000)	1 (10/100/1000)
Operating environment	0 - 40°C; 10 - 80% RH	0 - 40°C; 10 - 80% RH
Heat Output	1024 BTU	1024 BTU
Physical dimensions (w, h, d)	19" x 1.7" x 19.6" (1U)	19" x 3.46" x 18.9" (2U)
Weight	16 lbs (7.28 Kg)	30 lbs (13.57 Kg)
Power supply	300W, 100 - 240VAC	300W, 100 - 240VAC
MTBF	52,560 hrs (calculated)	52,560 hrs (calculated)
Certifications / Compliances	CE, UL 60950-1, CSA C22.2, RoHS	

### S2 Security Corporation

World Headquarters  
One Speen Street  
Framingham, MA 01701 USA  
Tel: +1 508 663 2500  
Fax: +1 508 663 2512

### S2 Security ASIA

808, #04-151 French Road  
Kitchener Complex  
Singapore 200808  
Singapore  
Tel: +65 65658916

**S2 SECURITY**  
*www.s2sys.com*